



PRINCE Dr. K. VASUDEVAN COLLEGE OF ENGINEERING AND TECHNOLOGY

(Approved by AICTE, Affiliated to Anna University & ISO 9001:2015 Certified Institution)
Medavakkam-Mambakkam Main Road, Ponmar, Chennai-600127

EMPLOYER FEEDBACK ANALYSIS REPORT

FEEDBACK ON ACADEMIC PERFORMANCE AND ITS ENRICHMENT / AMBIENCE OF THE INSTITUTION

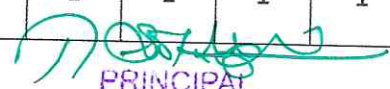
DEPARTMENT OF COMPUTER SCIENCE AND ENGINEERING

ACADEMIC YEAR: 2019-2020

RESPONDENTS: 4

1 - far from satisfied, 2 - not satisfied, 3 - satisfied, 4 - happy, 5 - very happy

S.NO	ATTRIBUTES ON ACADEMIC PERFORMANCE	1	2	3	4	5
1.	General communication skills	0	0	0	1	3
2.	Developing practical solutions to workplace problems	0	1	1	1	1
3.	Working as part of a team	0	0	1	1	2
4.	Creative in response to workplace challenges	0	1	1	1	1
5.	Self-motivated and taking on appropriate level of responsibility	0	0	1	1	2
6.	Open to new ideas and learning new techniques	0	0	1	1	2
7.	Using technology and workplace equipment	0	0	0	1	3
8.	Ability to contribute to the goal of the organization	0	1	1	1	1
9.	Technical knowledge/skill	0	0	0	2	2
10.	Ability to manage/leadership qualities	0	0	1	1	2
11.	Innovativeness, creativity	0	1	1	1	1
12.	Relationship with seniors/peers/subordinates	0	0	0	2	2
13.	Involvement in social activities	0	0	0	1	3
14.	Ability to take up extra responsibility	0	0	0	1	3
15.	Obligation to work beyond schedule if required	0	1	1	1	1


PRINCIPAL

PRINCE Dr. K. VASUDEVAN COLLEGE
OF ENGINEERING AND TECHNOLOGY
PONMAR, CHENNAI-600127



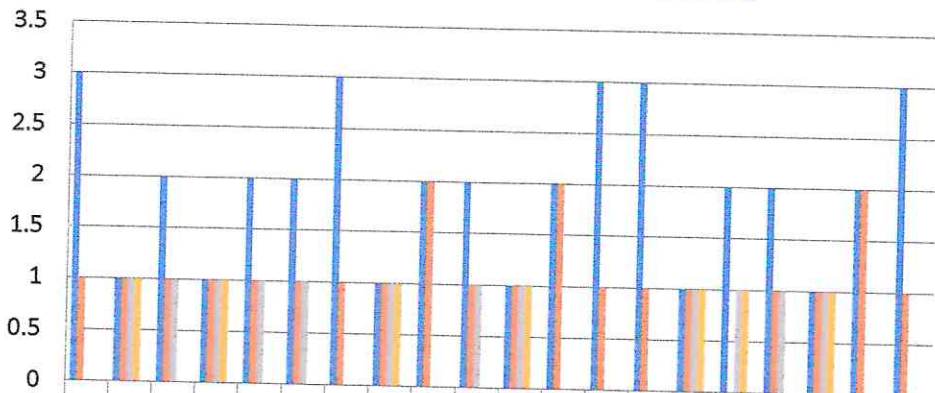
PRINCE Dr. K. VASUDEVAN COLLEGE OF ENGINEERING AND TECHNOLOGY

(Approved by AICTE, Affiliated to Anna University & ISO 9001:2015 Certified Institution)
Medavakkam-Mambakkam Main Road, Ponmar, Chennai-600127

S.NO	ATTRIBUTES ON AMBIENCE	1	2	3	4	5
16.	Learning Ambiance	0	1	1	0	2
17.	Functioning of Placement Cell	0	0	1	1	2
18.	Research Lab facilities	0	1	1	1	1
19.	Infrastructure to organize "Pool Campus"	0	0	0	2	2
20.	WIFI with adequate Bandwidth	0	0	0	1	3

EMPLOYER FEEDBACK 2019-2020 [CSE]

RESPONDENTS - 4



	Q1	Q2	Q3	Q4	Q5	Q6	Q7	Q8	Q9	Q10	Q11	Q12	Q13	Q14	Q15	Q16	Q17	Q18	Q19	Q20
Strongly Agree (5)	3	1	2	1	2	2	3	1	2	2	1	2	3	3	1	2	2	1	2	3
Agree (4)	1	1	1	1	1	1	1	1	2	1	1	2	1	1	1	0	1	1	2	1
Neutral (3)	0	1	1	1	1	1	0	1	0	1	1	0	0	0	1	1	1	1	0	0
Disagree (2)	0	1	0	1	0	0	0	1	0	0	1	0	0	0	1	1	0	1	0	0
Strongly Disagree (1)	0	0	0	0	0	0	0	0	0	0	0	0	0	0	0	0	0	0	0	0

[Signature]
PRINCIPAL

PRINCE Dr. K. VASUDEVAN COLLEGE
OF ENGINEERING AND TECHNOLOGY
PONMAR, CHENNAI-600127



PRINCE Dr. K. VASUDEVAN COLLEGE OF ENGINEERING AND TECHNOLOGY

(Approved by AICTE, Affiliated to Anna University & ISO 9001:2015 Certified Institution)
Medavakkam-Mambakkam Main Road, Ponmar, Chennai-600127

EMPLOYER FEEDBACK ANALYSIS REPORT

FEEDBACK ON ACADEMIC PERFORMANCE AND ITS ENRICHMENT / AMBIENCE OF THE INSTITUTION DEPARTMENT OF ELECTRONICS AND COMMUNICATION ENGINEERING

ACADEMIC YEAR: 2019-2020

RESPONDENTS: 4

1 - far from satisfied, 2 - not satisfied, 3 - satisfied, 4 - happy, 5 - very happy

S.NO	ATTRIBUTES ON ACADEMIC PERFORMANCE	1	2	3	4	5
1.	General communication skills	0	0	0	1	2
2.	Developing practical solutions to workplace problems	0	0	0	1	2
3.	Working as part of a team	0	0	0	1	3
4.	Creative in response to workplace challenges	0	0	0	1	2
5.	Self-motivated and taking on appropriate level of responsibility	0	0	1	1	1
6.	Open to new ideas and learning new techniques	0	0	0	1	2
7.	Using technology and workplace equipment	0	0	0	1	2
8.	Ability to contribute to the goal of the organization	0	0	1	1	1
9.	Technical knowledge/skill	0	0	0	1	2
10.	Ability to manage/leadership qualities	0	0	0	0	3
11.	Innovativeness, creativity	0	0	1	1	1
12.	Relationship with seniors/peers/subordinates	0	0	0	1	2
13.	Involvement in social activities	0	0	0	0	3
14.	Ability to take up extra responsibility	0	0	1	1	1
15.	Obligation to work beyond schedule if required	0	0	0	1	2

PRINCE Dr. K. VASUDEVAN COLLEGE
OF ENGINEERING AND TECHNOLOGY
PONMAR, CHENNAI-600127



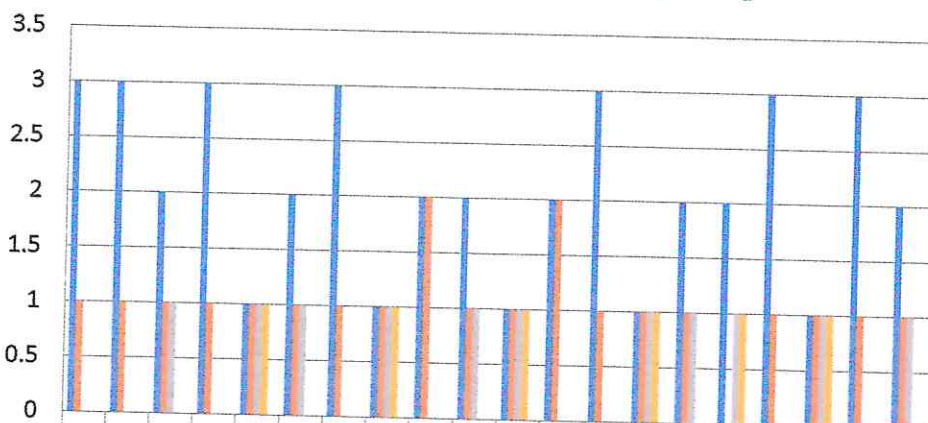
PRINCE Dr. K.VASUDEVAN COLLEGE OF ENGINEERING AND TECHNOLOGY

(Approved by AICTE, Affiliated to Anna University & ISO 9001:2015 Certified Institution)
Medavakkam-Mambakkam Main Road, Ponmar, Chennai-600127

S.NO	ATTRIBUTES ON AMBIENCE	1	2	3	4	5
16.	Learning Ambiance	0	0	1	0	2
17.	Functioning of Placement Cell	0	0	0	0	3
18.	Research Lab facilities	0	0	1	1	1
19.	Infrastructure to organize "Pool Campus"	0	0	0	0	3
20.	WIFI with adequate Bandwidth	0	0	0	1	2

EMPLOYER FEEDBACK 2019-2020 [ECE]

RESPONDENTS - 4



	Q1	Q2	Q3	Q4	Q5	Q6	Q7	Q8	Q9	Q10	Q11	Q12	Q13	Q14	Q15	Q16	Q17	Q18	Q19	Q20
Strongly Agree (5)	3	3	2	3	1	2	3	1	2	2	1	2	3	1	2	2	3	1	3	2
Agree (4)	1	1	1	1	1	1	1	1	2	1	1	2	1	1	1	0	1	1	1	1
Neutral (3)	0	0	1	0	1	1	0	1	0	1	1	0	0	1	1	1	0	1	1	1
Disagree (2)	0	0	0	0	1	0	0	1	0	0	1	0	0	1	0	1	0	1	0	0
Strongly Disagree (1)	0	0	0	0	0	0	0	0	0	0	0	0	0	0	0	0	0	0	0	0

PRINCIPAL
PRINCE Dr. K. VASUDEVAN COLLEGE
OF ENGINEERING AND TECHNOLOGY
PONMAR, CHENNAI-600127



PRINCE Dr. K. VASUDEVAN COLLEGE OF ENGINEERING AND TECHNOLOGY

(Approved by AICTE, Affiliated to Anna University & ISO 9001:2015 Certified Institution)
Medavakkam-Mambakkam Main Road, Ponmar, Chennai-600127

EMPLOYER FEEDBACK ANALYSIS REPORT

FEEDBACK ON ACADEMIC PERFORMANCE AND ITS ENRICHMENT / AMBIENCE OF THE INSTITUTION

DEPARTMENT OF ELECTRICAL AND ELECTRONICS ENGINEERING

ACADEMIC YEAR: 2019-2020

RESPONDENTS: 3

1 - far from satisfied, 2 - not satisfied, 3 - satisfied, 4 - happy, 5 - very happy

S.NO	ATTRIBUTES ON ACADEMIC PERFORMANCE	1	2	3	4	5
1.	General communication skills	0	0	0	1	2
2.	Developing practical solutions to workplace problems	0	0	1	1	1
3.	Working as part of a team	0	0	0	1	2
4.	Creative in response to workplace challenges	0	0	1	0	2
5.	Self-motivated and taking on appropriate level of responsibility	0	0	0	1	2
6.	Open to new ideas and learning new techniques	0	0	0	1	2
7.	Using technology and workplace equipment	0	0	0	1	3
8.	Ability to contribute to the goal of the organization	0	0	0	0	3
9.	Technical knowledge/skill	0	0	1	1	1
10.	Ability to manage/leadership qualities	0	0	0	0	3
11.	Innovativeness, creativity	0	0	0	1	2
12.	Relationship with seniors/peers/subordinates	0	0	0	1	2
13.	Involvement in social activities	0	0	0	0	3
14.	Ability to take up extra responsibility	0	0	1	1	1
15.	Obligation to work beyond schedule if required	0	0	0	1	2

PRINCIPAL
PRINCE Dr. K. VASUDEVAN COLLEGE
OF ENGINEERING AND TECHNOLOGY
MEDAVAKKAM-MAMBAKKAM MAIN ROAD, PONMAR, CHENNAI-600127



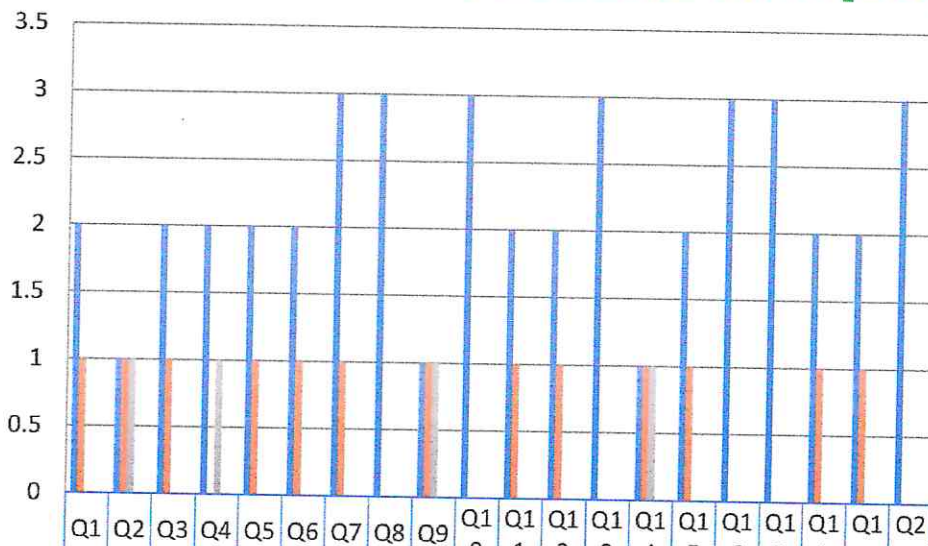
PRINCE Dr. K.VASUDEVAN COLLEGE OF ENGINEERING AND TECHNOLOGY

(Approved by AICTE, Affiliated to Anna University & ISO 9001:2015 Certified Institution)
Medavakkam-Mambakkam Main Road, Ponmar, Chennai-600127

S.NO	ATTRIBUTES ON AMBIENCE	1	2	3	4	5
16.	Learning Ambiance	0	0	0	0	3
17.	Functioning of Placement Cell	0	0	0	0	3
18.	Research Lab facilities	0	0	0	1	2
19.	Infrastructure to organize "Pool Campus"	0	0	0	1	2
20.	WIFI with adequate Bandwidth	0	0	0	0	3

EMPLOYER FEEDBACK 2019-2020 [EEE]

RESPONDENTS - 3



	Q1	Q2	Q3	Q4	Q5	Q6	Q7	Q8	Q9	Q10	Q11	Q12	Q13	Q14	Q15	Q16	Q17	Q18	Q19	Q20
Strongly Agree (5)	2	1	2	2	2	2	3	3	1	3	2	2	3	1	2	3	3	2	2	3
Agree (4)	1	1	1	0	1	1	1	0	1	0	1	1	0	1	1	0	0	1	1	0
Neutral (3)	0	1	0	1	0	0	0	0	1	0	0	0	0	1	0	0	0	0	0	0
Disagree (2)	0	0	0	0	0	0	0	0	0	0	0	0	0	0	0	0	0	0	0	0
Strongly Disagree (1)	0	0	0	0	0	0	0	0	0	0	0	0	0	0	0	0	0	0	0	0

PRINCIPAL
PRINCE Dr. K. VASUDEVAN COLLEGE
OF ENGINEERING AND TECHNOLOGY
PONMAR, CHENNAI-600127



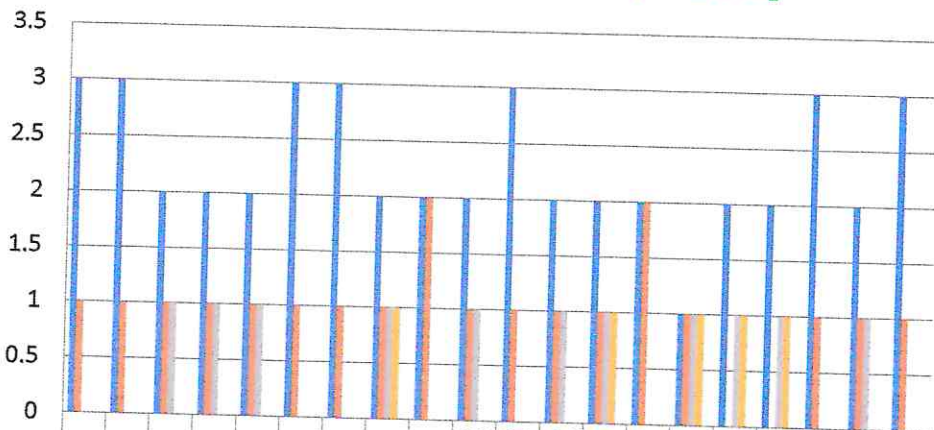
PRINCE Dr. K. VASUDEVAN COLLEGE OF ENGINEERING AND TECHNOLOGY

(Approved by AICTE, Affiliated to Anna University & ISO 9001:2015 Certified Institution)
Medavakkam-Mambakkam Main Road, Ponmar, Chennai-600127

S.NO	ATTRIBUTES ON AMBIENCE	1	2	3	4	5
16.	Learning Ambiance	0	1	1	0	2
17.	Functioning of Placement Cell	0	1	1	0	2
18.	Research Lab facilities	0	0	0	1	3
19.	Infrastructure to organize "Pool Campus"	0	0	1	1	2
20.	WIFI with adequate Bandwidth	0	0	0	1	3

EMPLOYER FEEDBACK 2019-2020 [MECH]

RESPONDENTS - 4



	Q1	Q2	Q3	Q4	Q5	Q6	Q7	Q8	Q9	Q1	Q1	Q1	Q1	Q1	Q1	Q1	Q1	Q1	Q1	Q2
Strongly Agree (5)	3	3	2	2	2	3	3	2	2	2	3	2	2	2	1	2	2	3	2	3
Agree (4)	1	1	1	1	1	1	1	1	2	1	1	1	1	2	1	0	0	1	1	1
Neutral (3)	0	0	1	1	1	0	0	1	0	1	0	1	1	0	1	1	1	0	1	0
Disagree (2)	0	0	0	0	0	0	0	1	0	0	0	0	1	0	1	1	1	0	0	0
Strongly Disagree (1)	0	0	0	0	0	0	0	0	0	0	0	0	0	0	0	0	0	0	0	0

PRINCIPAL
PRINCE Dr. K. VASUDEVAN COLLEGE
OF ENGINEERING AND TECHNOLOGY
PONMAR, CHENNAI-600127